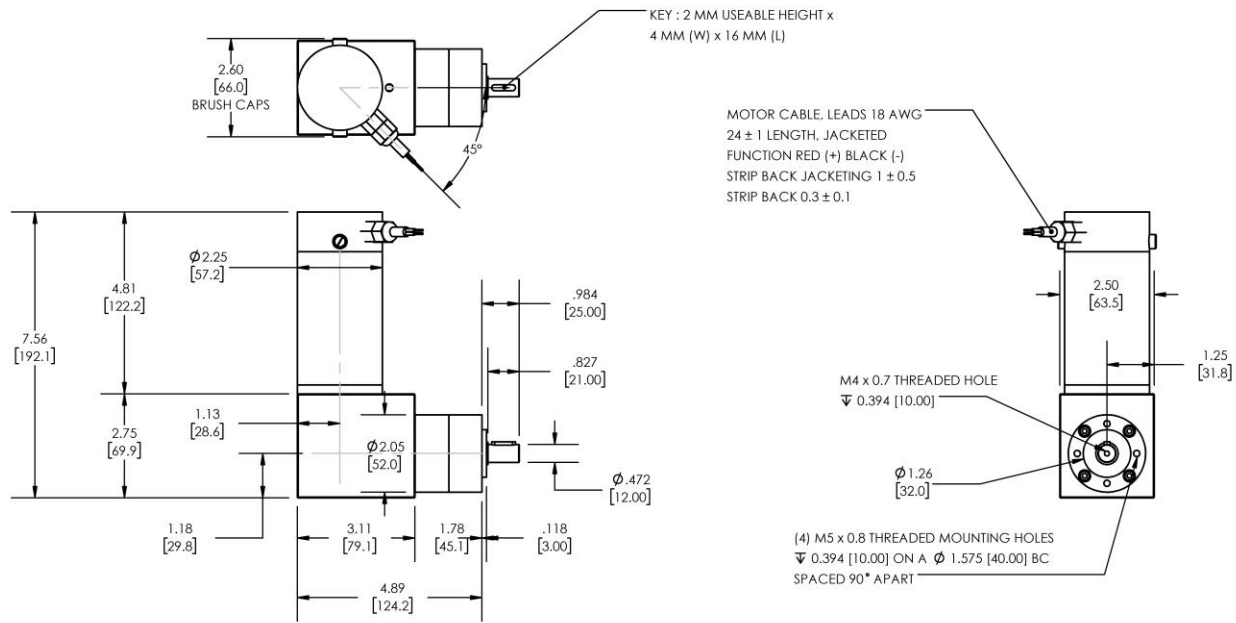


**Model Number:**

## MMP D22-490B-24V GRA52-03.7



DIMENSIONS ARE INCHES [MM] UNLESS OTHERWISE STATED

PLANETARY GEARMOTOR OUTPUT PARAMETERS:	VALUE	UNITS	TOLERANCE
Gearhead Ratio (exact)	3.70 : 1		
Gearhead Shaft Output Speed (at full-load)	1208	RPM	MAX
Gearmotor Rated Continuous Torque	8.9	In-Lbs	MAX
Gearmotor Rated Peak Torque	<b>33++</b>	In-Lbs	----
Gearhead Standard Backlash	42	Arc Minutes	MAX
Gearhead Efficiency	80%	----	----
Output Shaft Radial Load Capacity	45	Lbs	MAX
Output Shaft Axial Load Capacity	14	Lbs	MAX
Gearmotor Total Weight	6.0	Lbs	MAX

**++ All Peak Torque values are dependent upon duty. Contact our sales office for details.**

DC MOTOR PERFORMANCE PARAMETERS:	VALUE	UNITS	TOLERANCE
Rated DC Voltage	24	DC VOLTS	----
Rated Continuous Current	9.1	AMPERES	----
No-Load Speed	5581	RPM	MAX
Rated Speed	4470	RPM	+/- 15%
Rated Continuous Power Out	160	WATTS	+/- 15%
Rated Continuous Torque	48	OZ-IN	----
Peak Torque (motor only)	176	OZ-IN	----
No-Load Current	0.76	AMPERES	MAX
Back EMF Constant (Ke)	4.3	V/KRPM	+/- 10%
Torque Constant (Kt)	5.8	OZ-IN/AMP	+/- 10%
DC Armature Resistance	0.53	OHMS	+/- 15%
Armature Inductance	0.40	mH	+/- 15%
Armature temperature	155	DEG. C	MAX

**NOTES:**

- ENCODER & BRAKE OPTIONS AVAILABLE – [FOLLOW THIS LINK FOR DETAILS](#)
- NEMA MOUNTING FLANGE OPTION AVAILABLE – [FOLLOW THIS LINK FOR DETAILS](#)

# MIDWEST MOTION PRODUCTS, INC

DESIGN, MANUFACTURING & DISTRIBUTION - MOTION CONTROL EQUIPMENT

[www.midwestmotion.com](http://www.midwestmotion.com)

email: [sales@midwestmotion.com](mailto:sales@midwestmotion.com)